

Fly Quiet Program Update

Jackson Hole Airport

February 3, 2022



Goal of Fly Quiet

Encourage operators to fly as quietly as possible with the quietest available aircraft and adhere to the airport's noise abatement programs to minimize noise impacts.





Fly Quiet Program Elements and Bonuses

ELEMENTS	Goal	Measure
Fleet Quality	Acknowledge/encourage operators to fly the quietest aircraft	<ul style="list-style-type: none">• FAA Aircraft Certificated Stage Noise Level• Stage 5 is highest
Minimize Higher Noise Events	Minimize the highest aircraft noise events from individual overflights	<ul style="list-style-type: none">• Track % higher noise events per total operations• Zero high events the highest score (100%)
Minimize Violation of Voluntary Curfew	<p>Rated upon number of times an operation occurred during the voluntary curfew hours</p> <p>11:30 pm to 6 am for arrivals 10 pm to 6 am for departures</p>	<ul style="list-style-type: none">• Number of flights in curfew hours• <u>Low score</u> is based upon <u>greater number</u> of curfew violations• Zero curfew operations is highest score (100%)
Flight Procedure Compliance	Three procedures evaluated with results combined into one score	<ul style="list-style-type: none">• Rated on % of flights following procedure goal• Full compliance is the highest score (100%)

BONUSES	Goal	Measure
Quiet Fleet Bonus	Acknowledge/encourage operators that operate the very quietest aircraft	<ul style="list-style-type: none">• Aircraft that are at least 10 dB higher than the Stage 5 standard. Up to 5 points for percent of fleet that is Stage 5+
<i>Fly RNP Bonus</i>	Flying the new RNP procedure Starting in 2022	<ul style="list-style-type: none">• Rated on % of flights flying procedure goal for Full compliance is the highest score (5 bonus points)
<i>Sustainability Bonus</i>	Bonus points if an operator offsets all its CO2 at JAC or operation wide. Starting in 2022	<ul style="list-style-type: none">• Three bonus points if all JAC emissions are offset• Five bonus points if all emissions are offset



Fly Quiet Scoring

❖ Scoring System

- Results scaled on a 0-100% scoring system
- **100%** is considered the best possible in each category
- Overall best score is the highest average of all 4 categories

FLY QUIET RATING	FLY QUIET
FQ Top Tier	90% - 100%
FQ Compliant	70% - 90%
FQ Non Compliant	0% - 70%

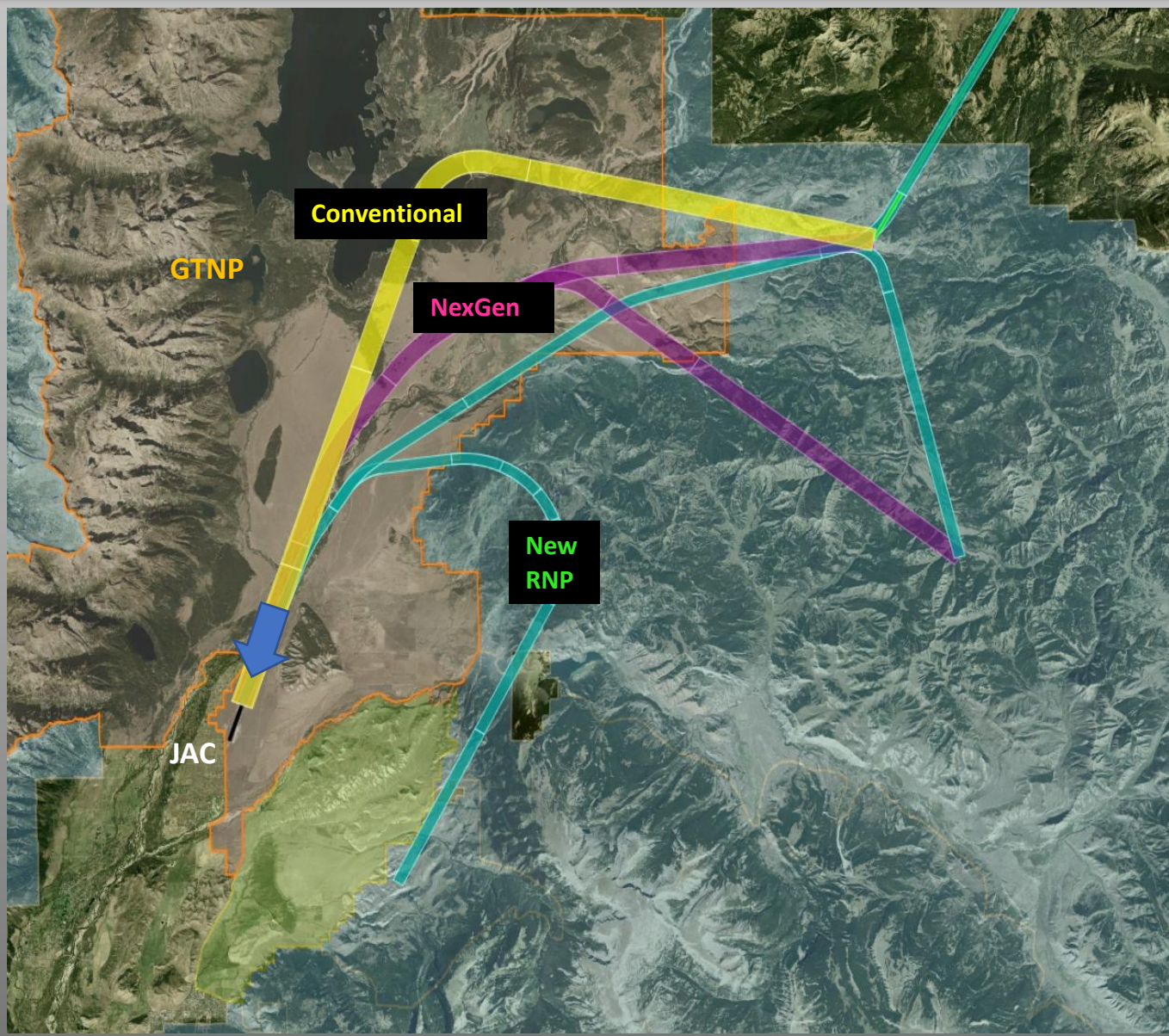
❖ Notifications and Acknowledgements

- Both Best and Poor operators in each category below and most improved

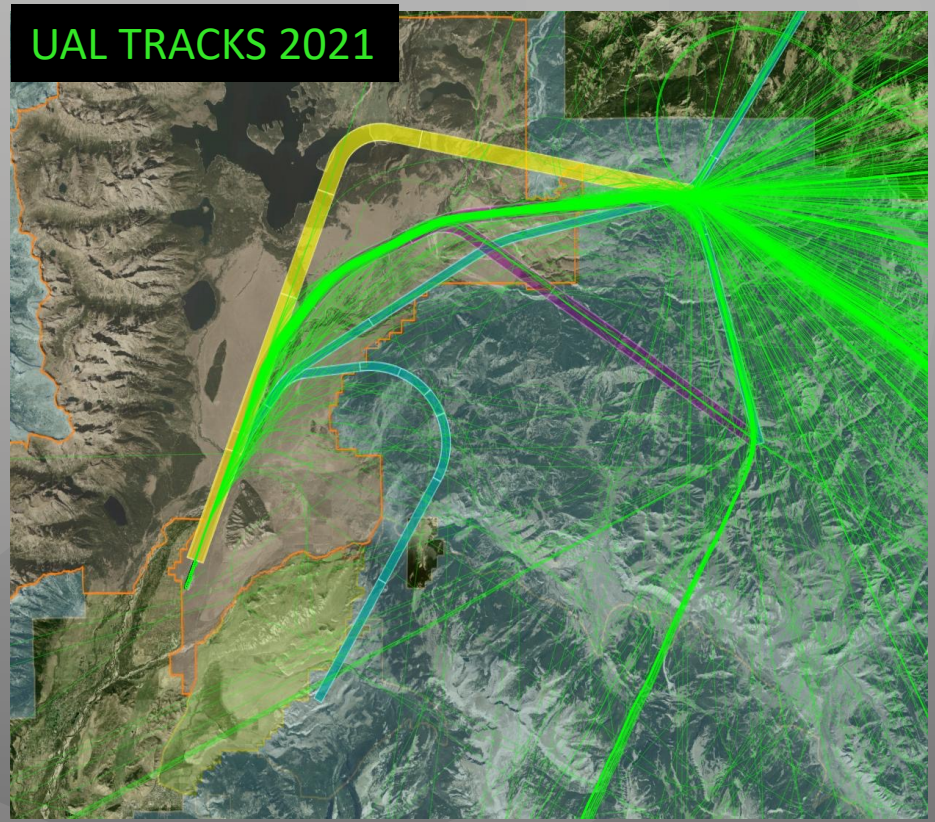
CATEGORY OF JET OPERATOR	CLASSIFICATION BY NUMBER OF ANNUAL OPERATIONS
Commercial and Regional Jet Airlines	Minimum of 6 operations
Part 135 Business Jets (fleets, fractional ownership)	-Operators with 30 or more flights -Operators with less than 30 -Minimum of 6 operations
Single Jet Owner/ Operator (i.e., N1234)	-Operators with 30 or more flights -Operators with less than 30 -Minimum of 6 operations



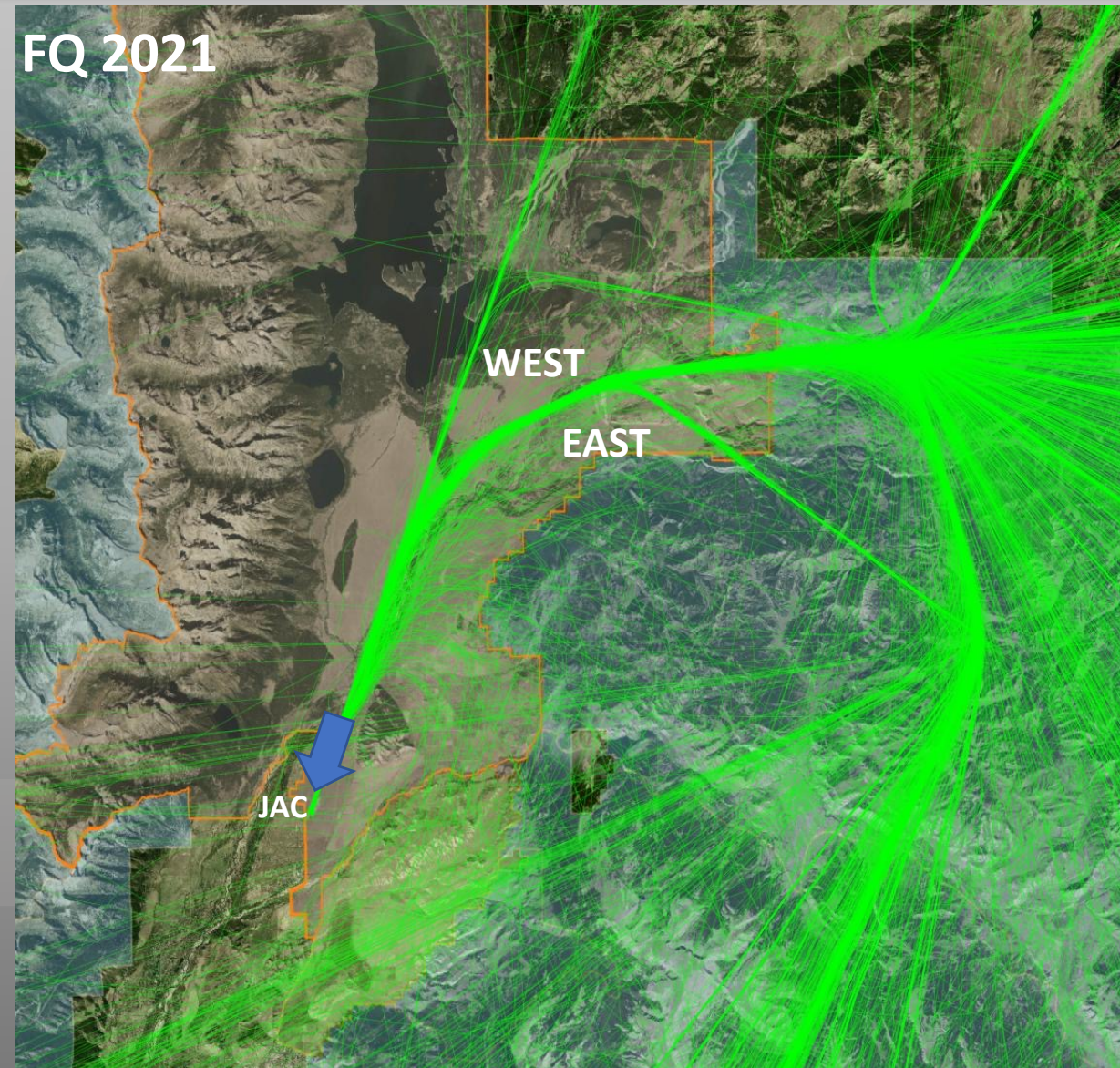
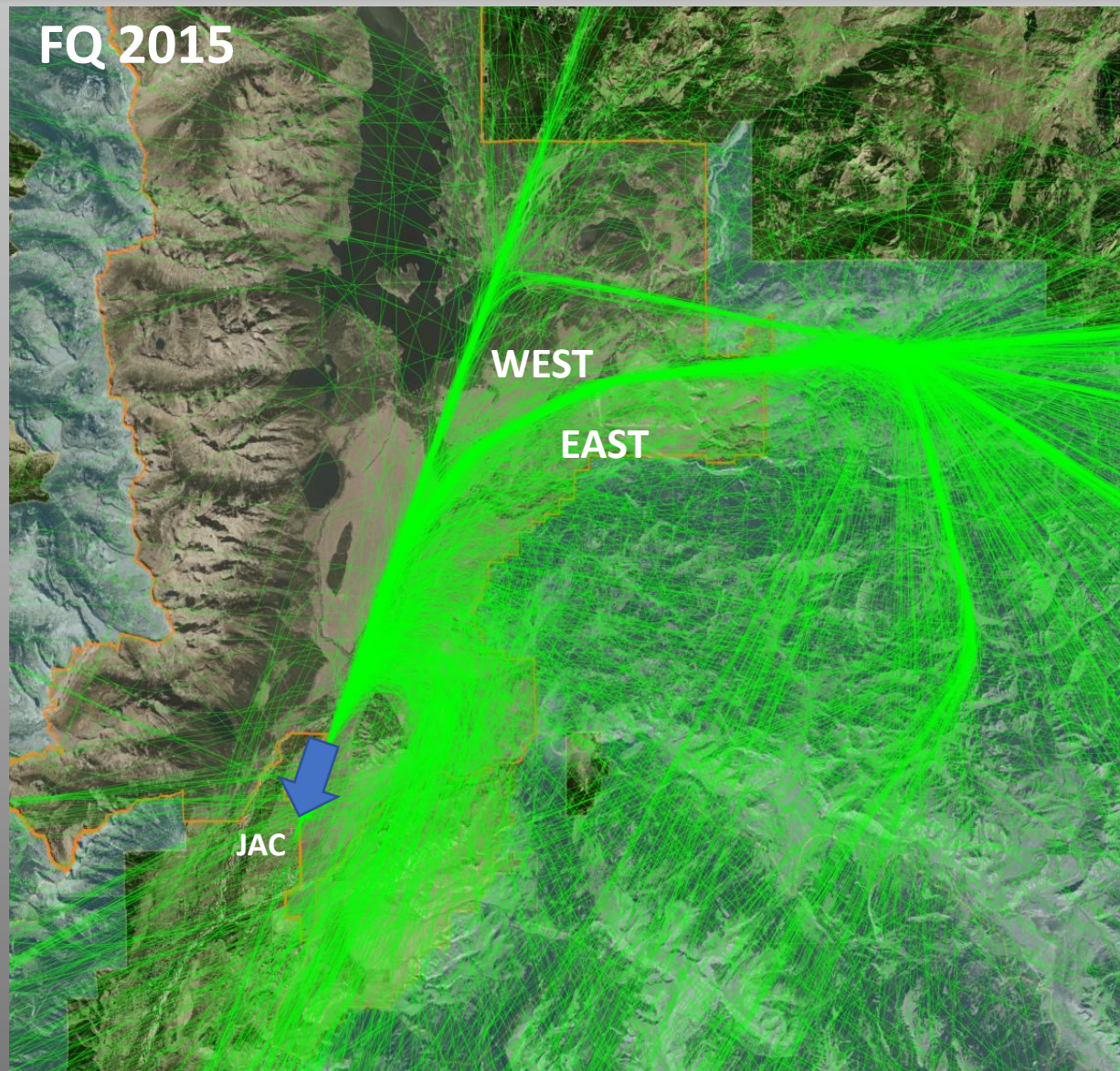
South Arrival Procedures over GTNP (Conventional / NextGen / New RNP)



- ❖ NextGen Flight Path Compliance
- ❖ East of NextGen Flight Path
- ❖ Future New RNP Usage

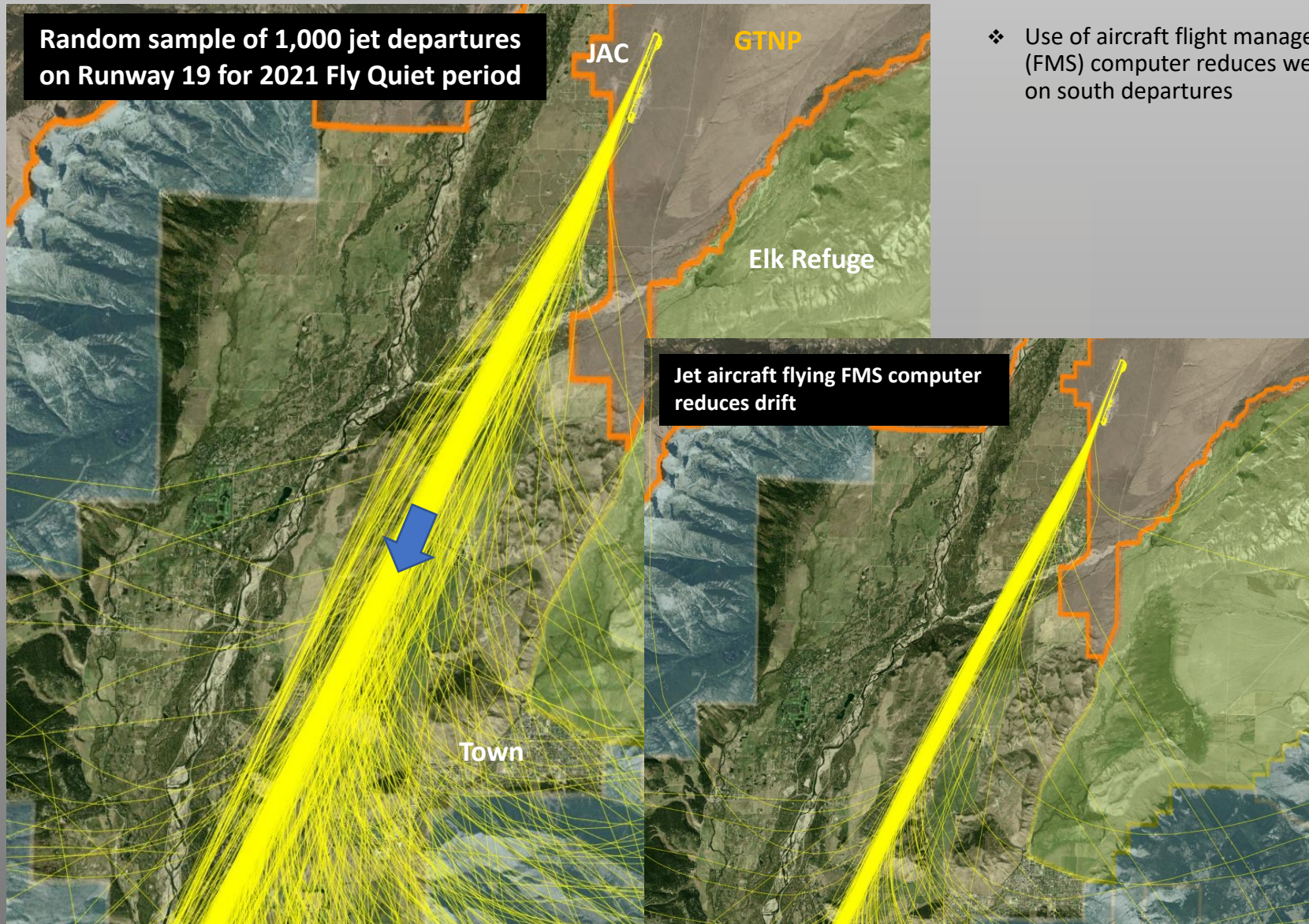


Jet Arrival Flight Tracks over GTNP (Fly Quiet Period 2015 vs. 201)





South Departure Flight Procedures



- ❖ Use of aircraft flight management system (FMS) computer reduces westward drift on south departures



Raw Data

Air Carrier

Code	Total Annual Ops	Total Stage 5 Plus	Curfew Hour Ops	Percent Comply Curfew	Total High Events	Percent High Evt's Per Ops	So Dept Left Turn	Total GPS v CONV	Valid GPS v CONV	Percent GPS v CONV	Total East v West	Valid East v West	Percent East v West	Total South Flights	Valid Without Drift	Percent Without Drift	Percent All Proc
SKW	3,434	0	4	99.9%	347	88.0%	1	1396	1378	98.7%	1484	1416	95.4%	1479	1473	99.6%	97.9%
UAL	3,259	0	2	99.9%	347	87.2%	1	1248	1245	99.8%	1378	1338	97.1%	1340	1339	99.9%	98.9%
DAL	2,984	0	4	99.9%	349	87.3%	3	1076	1073	99.7%	1197	1185	99.0%	1181	1177	99.7%	99.5%
AAL	2,495	0	1	100.0%	349	84.9%	2	722	701	97.1%	1068	1039	97.3%	1099	1097	99.8%	98.1%
AAY	122	0	0	100.0%	4	96.0%	0	47	47	100.0%	52	47	90.4%	54	54	100.0%	96.8%
FFT	73	8	0	100.0%	3	95.8%	0	26	26	100.0%	29	29	100.0%	28	28	100.0%	100.0%
SCX	61	0	0	100.0%	10	77.8%	0	22	22	100.0%	23	23	100.0%	26	26	100.0%	100.0%

Part 135

Code	Total Annual Ops	Total Stage 5 Plus	Curfew Hour Ops	Percent Comply Curfew	Total High Events	Percent High Evt's Per Ops	So Dept Left Turn	Total GPS v CONV	Valid GPS v CONV	Percent GPS v CONV	Total East v West	Valid East v West	Percent East v West	Total South Flights	Valid Without Drift	Percent Without Drift	Percent All Proc
EJA	3,660	2,047	5	99.9%	148	95.8%	0	1331	1278	96.0%	1557	1386	89.0%	1520	1475	97.0%	94.0%
LXJ	1,627	839	2	99.9%	69	95.6%	0	560	530	94.6%	679	585	86.2%	683	672	98.4%	93.1%
TWY	391	2	3	99.2%	36	89.5%	0	141	135	95.7%	162	150	92.6%	165	165	100.0%	96.1%
FTH	369	327	1	99.7%	14	95.9%	1	145	138	95.2%	161	146	90.7%	162	157	96.9%	94.3%
EJM	340	24	0	100.0%	40	86.8%	0	143	137	95.8%	154	145	94.2%	144	134	93.1%	94.3%
XOJ	297	114	0	100.0%	11	95.8%	0	109	105	96.3%	125	114	91.2%	124	122	98.4%	95.3%
JTL	229	25	0	100.0%	14	93.3%	0	72	61	84.7%	94	69	73.4%	99	69	69.7%	75.9%

Single Operators

Code	Total Annual Ops	Total Stage 5 Plus	Curfew Hour Ops	Percent Comply Curfew	Total High Events	Percent High Evt's Per Ops	So Dept Left Turn	Total GPS v CONV	Valid GPS v CONV	Percent GPS v CONV	Total East v West	Valid East v West	Percent East v West	Total South Flights	Valid Without Drift	Percent Without Drift	Percent All Proc
N630WB	109	109	0	100.0%	3	96.6%	0	23	20	87.0%	46	32	69.6%	40	40	100.0%	85.5%
N980CC	105	0	0	100.0%	16	85.5%	0	29	28	96.6%	42	28	66.7%	43	40	93.0%	85.4%
N284CP	88	0	0	100.0%	21	75.3%	0	23	23	100.0%	35	31	88.6%	42	8	19.0%	69.2%
N307ST	73	0	0	100.0%	22	58.5%	0	25	24	96.0%	25	24	96.0%	30	30	100.0%	97.3%
N122WY	67	0	0	100.0%	1	98.2%	0	13	12	92.3%	25	23	92.0%	27	25	92.6%	92.3%
N393BV	66	0	0	100.0%	5	92.8%	0	24	24	100.0%	30	26	86.7%	30	29	96.7%	94.4%
N900BC	62	0	0	100.0%	3	94.9%	0	17	16	94.1%	29	17	58.6%	26	23	88.5%	80.4%



Commercial Jets – Fly Quiet Score 2021

OPERATOR				FLY QUIET ELEMENTS				BONUSES			OVERALL	
Code	Operator	Total Ops	Primary Aircraft Type	Quiet Fleet Score (25 Points)	Follow Procedures Score (25 points)	Quieter Events Score (25 Points)	Voluntary Curfew Score (25 Points)	Quiet Fleet Bonus (5 pts)	Fly RNP Bonus (5 pts)	Sustainability Bonus (5 pts)	Total Fly Quiet Score	Fly Quiet Rating Expectation
FFT	Frontier	73	A319	19.0	25.0	22.9	25.0	0.5	0.0	0.0	92.4	FQ Top Tier
AAY	Allegiant Air	122	A319	18.3	21.8	23.0	25.0	0.0	0.0	0.0	88.0	FQ Compliant
SCX	Sun Country Airlines	61	B737	17.7	25.0	13.9	25.0	0.0	0.0	0.0	81.6	FQ Compliant
AAL	American Airlines	2,495	A319	18.3	23.1	17.5	22.0	0.0	0.0	0.0	80.8	FQ Compliant
UAL	United Airlines	3,259	A320	18.0	23.9	18.6	20.0	0.0	0.0	0.0	80.5	FQ Compliant
DAL	Delta Air Lines	2,984	A319	18.2	24.5	18.6	18.0	0.0	0.0	0.0	79.3	FQ Compliant
SKW	Skywest Airlines	3,434	E75L	17.0	22.9	19.0	18.0	0.0	0.0	0.0	76.9	FQ Compliant



Corporate Jets (Part 135)

30 Operations per year or greater – Fly Quiet Score 2021

OPERATOR				FLY QUIET ELEMENTS				BONUSES			OVERALL	
Code	Operator	Total Ops	Primary Aircraft Type	Quiet Fleet Score (25 Points)	Follow Procedures Score (25 Points)	Quieter Events Score (25 Points)	Voluntary Curfew Score (25 Points)	Quiet Fleet Bonus (5 pts)	Fly RNP Bonus (5 pts)	Sustainability Bonus (5 pts)	Total Fly Quiet Score	Fly Quiet Rating Expectation
WMN	Trident Aircraft	35	LJ60	25.0	23.0	20.5	25.0	5.0	0.0	0.0	98.5	FQ Top Tier
TIV	Thrive Aviation	125	C25B	24.9	22.9	22.2	25.0	2.2	0.0	0.0	97.2	FQ Top Tier
SVL	Sun Devil Aviation	74	C25B	24.9	22.8	23.5	25.0	0.7	0.0	0.0	96.9	FQ Top Tier
XOJ	XOJet	297	CL30	24.7	20.3	22.9	25.0	1.9	0.0	0.0	94.8	FQ Top Tier
XSR	Airshare	48	E55P	24.9	14.5	25.0	25.0	4.4	0.0	0.0	93.8	FQ Top Tier
FTH	Mountain Aviation	369	C750	24.7	19.3	23.0	22.0	4.4	0.0	0.0	93.3	FQ Top Tier
DJR	Desert Jet	34	C25B	22.5	19.9	23.1	25.0	0.1	0.0	0.0	90.7	FQ Top Tier
BLK	USAC Airways 695	73	E35L	22.9	20.4	21.9	25.0	0.0	0.0	0.0	90.1	FQ Top Tier
PXT	Pacific Coast Jet	139	C25B	24.9	14.7	23.8	25.0	1.4	0.0	0.0	89.7	FQ Compliant
SDU	Dumont Aviation	35	F2TH	19.5	23.0	21.9	25.0	0.0	0.0	0.0	89.4	FQ Compliant
YEL	Summit Aviation	58	E55P	25.0	14.3	23.0	22.0	5.0	0.0	0.0	89.3	FQ Compliant
IJA	International Jet Aviation	38	LJ60	22.3	16.7	21.9	25.0	3.0	0.0	0.0	88.9	FQ Compliant
LXJ	Bombardier FlexJet	1,627	E55P	24.6	18.1	22.8	20.0	2.6	0.0	0.0	88.1	FQ Compliant
PHJ	Peach Jet	30	C56X	23.5	13.0	25.0	25.0	0.0	0.0	0.0	86.4	FQ Compliant
EJA	NetJets Aviation	3,660	C68A	24.7	19.0	22.9	17.0	2.8	0.0	0.0	86.4	FQ Compliant
EJM	Executive Jet Management	340	CL60	22.4	19.3	18.4	25.0	0.4	0.0	0.0	85.5	FQ Compliant
WWI	Worldwide Jet Charter	40	GLF4	21.0	20.8	18.4	25.0	0.0	0.0	0.0	85.3	FQ Compliant
DPJ	Wheels Up Private Jets	212	C56X	23.3	16.1	19.6	25.0	0.5	0.0	0.0	84.5	FQ Compliant
FWK	Flightworks	58	GALX	23.2	16.4	17.7	25.0	1.1	0.0	0.0	83.5	FQ Compliant
SIS	Silver Air Airlines	90	GALX	22.8	13.9	20.8	25.0	0.8	0.0	0.0	83.2	FQ Compliant
TWY	Sunset Aviation	391	GLF6	22.4	21.1	19.7	19.0	0.0	0.0	0.0	82.2	FQ Compliant
CWG	Clear Wing	32	E35L	20.8	19.9	15.0	25.0	0.3	0.0	0.0	80.9	FQ Compliant
SLH	Silverhawk Aviation	44	C56X	22.9	14.7	17.6	25.0	0.5	0.0	0.0	80.7	FQ Compliant
JCY	Aerius Management	114	F900	22.8	10.6	20.5	25.0	1.0	0.0	0.0	79.9	FQ Compliant
KPO	NXT Jet	58	GLF4	21.7	22.1	10.9	25.0	0.0	0.0	0.0	79.8	FQ Compliant
GAJ	Wheels Up Gama Aviation	91	C750	24.7	2.6	24.4	25.0	2.5	0.0	0.0	79.1	FQ Compliant
EDG	Jet Edge	129	GLF4	21.8	22.5	11.3	22.0	0.0	0.0	0.0	77.6	FQ Compliant
PFT	Paragon Airways	46	C56X	23.8	0.0	25.0	25.0	1.1	0.0	0.0	74.9	FQ Compliant
DRL	Omini Air Transport	30	LJ75	24.5	1.2	21.6	25.0	1.0	0.0	0.0	73.3	FQ Compliant
CAK	Southwest Aircraft Charte	36	LJ45	24.6	0.0	23.5	25.0	0.0	0.0	0.0	73.0	FQ Compliant
SGO	Admiral Beverage	53	H25B	15.9	23.8	7.2	25.0	0.0	0.0	0.0	72.0	FQ Compliant
RGY	Regency Airlines	79	BE40	15.4	16.9	14.5	25.0	0.0	0.0	0.0	71.9	FQ Compliant
JTL	Jet Linx	229	C56X	23.3	0.9	21.7	25.0	0.5	0.0	0.0	71.4	FQ Compliant
COL	SC Aviation	45	H25B	17.3	15.1	12.5	25.0	0.0	0.0	0.0	69.8	FQ Low Tier
DCM	FltPlan.com	32	LJ35	22.0	3.6	15.4	25.0	1.7	0.0	0.0	67.7	FQ Low Tier
TTE	Avcenter	78	C560	20.9	0.0	17.6	25.0	1.0	0.0	0.0	64.5	FQ Low Tier



Corporate Jets (Part 135)

Between 30 and 6 Operations per year – Fly Quiet Score 2021

OPERATOR				FLY QUIET ELEMENTS				BONUSES			OVERALL	
Code	Operator	Total Ops	Primary Aircraft Type	Quiet Fleet Score (25 Points)	Follow Procedures Score (25 points)	Quieter Events Score (25 Points)	Voluntary Curfew Score (25 Points)	Quiet Fleet Bonus (5 pts)	Fly RNP Bonus (5 pts)	Sustainability Bonus (5 pts)	Total Fly Quiet Score	Fly Quiet Rating Expectation
PXG	Aitheras Aviation Group	8	C680	25.0	25.0	25.0	25.0	5.0	0.0	0.0	105.0	FQ Top Tier
SWD	Southern Winds	8	C680	25.0	25.0	25.0	25.0	3.8	0.0	0.0	103.8	FQ Top Tier
GLT	Aero Charter	8	C56X	25.0	25.0	25.0	25.0	1.3	0.0	0.0	101.3	FQ Top Tier
XLS	Excel Aire LLC	18	E35L	23.8	25.0	25.0	25.0	2.2	0.0	0.0	101.0	FQ Top Tier
CHR	Chairman Airmotive	12	C750	25.0	25.0	22.4	25.0	2.9	0.0	0.0	100.3	FQ Top Tier
CHN	Channel Island Aviation	8	C25B	25.0	25.0	25.0	25.0	0.0	0.0	0.0	100.0	FQ Top Tier
MAD	Malone Air Charter	6	CL30	25.0	25.0	25.0	25.0	0.0	0.0	0.0	100.0	FQ Top Tier
ASP	AirSprint	8	C25B	24.6	25.0	25.0	25.0	0.0	0.0	0.0	99.6	FQ Top Tier
LJY	LJ Aviation	12	CL30	23.1	25.0	25.0	25.0	0.8	0.0	0.0	98.9	FQ Top Tier
NEW	Northeastern Aviation	14	CL60	23.2	25.0	25.0	25.0	0.0	0.0	0.0	98.2	FQ Top Tier
SBE	World Class Aviation	6	GLF4	23.1	25.0	25.0	25.0	0.0	0.0	0.0	98.1	FQ Top Tier
X8P	Unknown	6	GLF5	22.9	25.0	25.0	25.0	0.0	0.0	0.0	97.9	FQ Top Tier
LKF	Aviation Advisor	14	C680	24.8	20.2	25.0	25.0	2.9	0.0	0.0	97.9	FQ Top Tier
KOW	Baker Aviation	15	C750	23.6	19.4	25.0	25.0	3.7	0.0	0.0	96.7	FQ Top Tier
FDY	Southern Airways Express	6	C550	21.2	25.0	25.0	25.0	0.0	0.0	0.0	96.2	FQ Top Tier
HPJ	Hop-a-Jet Inc.	12	LJ60	24.1	19.4	25.0	25.0	2.5	0.0	0.0	96.0	FQ Top Tier
FFL	Foreflight	22	CL60	23.3	25.0	22.1	25.0	0.7	0.0	0.0	96.0	FQ Top Tier
PRD	Presidential Aviation	7	C750	23.7	25.0	18.8	25.0	2.9	0.0	0.0	95.3	FQ Top Tier
STV	Saturn Aviation	11	C560	18.6	25.0	25.0	25.0	0.0	0.0	0.0	93.6	FQ Top Tier
HER	Hera Flight	23	C750	25.0	14.3	22.7	25.0	5.0	0.0	0.0	92.0	FQ Top Tier
JTZ	Nicholas Air	9	E55P	25.0	11.7	25.0	25.0	5.0	0.0	0.0	91.7	FQ Top Tier
MMN	Pro Airways	8	F2TH	20.3	25.0	19.4	25.0	0.0	0.0	0.0	89.7	FQ Compliant
RLI	Empyrean Jet	6	C525	25.0	13.9	25.0	25.0	0.0	0.0	0.0	88.9	FQ Compliant
CJE	Aeroservices Corporate	8	E35L	22.9	25.0	15.0	25.0	0.0	0.0	0.0	87.9	FQ Compliant
JIT	Jet It Aviation	16	HJDT	25.0	15.5	17.3	25.0	5.0	0.0	0.0	87.8	FQ Compliant
MVJ	Mira Vista Aviation	14	GLF4	22.1	15.5	25.0	25.0	0.0	0.0	0.0	87.6	FQ Compliant
XLJ	Xcel Jet	14	LJ40	24.6	15.5	20.8	25.0	0.0	0.0	0.0	85.9	FQ Compliant
TFF	Talon Air	25	HA4T	22.8	18.9	18.8	25.0	0.0	0.0	0.0	85.5	FQ Compliant
GJE	Global Jet	14	GLF5	22.1	19.4	18.8	25.0	0.0	0.0	0.0	85.3	FQ Compliant

OPERATOR				FLY QUIET ELEMENTS				BONUSES			OVERALL	
Code	Operator	Total Ops	Primary Aircraft Type	Quiet Fleet Score (25 Points)	Follow Procedures Score (25 points)	Quieter Events Score (25 Points)	Voluntary Curfew Score (25 Points)	Quiet Fleet Bonus (5 pts)	Fly RNP Bonus (5 pts)	Sustainability Bonus (5 pts)	Total Fly Quiet Score	Fly Quiet Rating Expectation
DOW	Best Jets International	8	F900	22.5	25.0	12.5	25.0	0.0	0.0	0.0	85.0	FQ Compliant
ERY	Sky Quest	10	CL30	22.0	25.0	12.5	25.0	0.0	0.0	0.0	84.5	FQ Compliant
MLN	Air Madeleine	6	GLF4	21.9	25.0	12.5	25.0	0.0	0.0	0.0	84.4	FQ Compliant
GDS	Steelman Aviation	6	PC24	21.6	25.0	12.5	25.0	0.0	0.0	0.0	84.1	FQ Compliant
RVJ	Aircraft Management Group	9	BE40	19.7	25.0	12.5	25.0	0.0	0.0	0.0	82.2	FQ Compliant
PEG	Pegasus Elite Aviation	18	GLF4	22.6	18.0	15.6	25.0	0.3	0.0	0.0	81.5	FQ Compliant
JAS	Jet Aviation Flight Servi	17	GLEK	20.9	16.7	18.0	25.0	0.0	0.0	0.0	80.6	FQ Compliant
FTD	AB Jets	23	LJ60	25.0	0.0	25.0	25.0	5.0	0.0	0.0	80.0	FQ Compliant
PJC	Pittsburgh Jet Center	10	C25B	25.0	5.0	25.0	25.0	0.0	0.0	0.0	80.0	FQ Compliant
SJA	Sawyer Aviation	6	C525	24.5	8.3	18.8	25.0	3.3	0.0	0.0	79.9	FQ Compliant
MWT	Midwest Aviation	11	C650	16.4	25.0	12.5	25.0	0.0	0.0	0.0	78.9	FQ Compliant
CNS	Cobalt Air	25	PC24	21.6	15.0	17.3	25.0	0.0	0.0	0.0	78.9	FQ Compliant
XAA	ARINC/Aeronautical Radio	7	GLF4	24.3	8.3	20.0	25.0	0.0	0.0	0.0	77.7	FQ Compliant
JNY	Jenney Beechcraft	16	GLF4	21.9	25.0	5.0	25.0	0.0	0.0	0.0	76.9	FQ Compliant
CYO	Air Transport	22	LJ60	24.3	0.0	22.5	25.0	4.5	0.0	0.0	76.3	FQ Compliant
KFB	STAJets	10	GLF4	21.1	25.0	4.5	25.0	0.0	0.0	0.0	75.7	FQ Compliant
PWA	Priester Charters	12	HA4T	22.2	13.9	13.5	25.0	0.8	0.0	0.0	75.3	FQ Compliant
NJM	Northern Jet Management	10	LJ70	24.3	0.6	25.0	25.0	0.0	0.0	0.0	74.8	FQ Compliant
OKC	Private Jets	24	E35L	20.0	12.6	17.0	25.0	0.0	0.0	0.0	74.6	FQ Compliant
DHR	Jett Aircraft	8	LJ45	24.6	0.0	25.0	25.0	0.0	0.0	0.0	74.6	FQ Compliant
DLX	Dreamline Aviation	29	LJ45	24.6	0.0	23.0	25.0	1.6	0.0	0.0	74.2	FQ Compliant
EGC	First Wing Aircraft	22	C56X	24.7	0.0	22.7	25.0	1.4	0.0	0.0	73.7	FQ Compliant
OTA	Business Aviators	18	H25B	15.9	25.0	7.1	25.0	0.0	0.0	0.0	73.1	FQ Compliant
SJE	Sun Air Jets	19	GLF4	21.6	9.1	14.3	25.0	1.6	0.0	0.0	71.6	FQ Compliant
PRE	Precision Airlines	23	LJ45	23.6	0.8	21.9	25.0	0.0	0.0	0.0	71.3	FQ Compliant
CST	Coast Air	10	C56X	25.0	0.0	20.5	25.0	0.0	0.0	0.0	70.5	FQ Compliant
SJJ	Spirit Jets	14	H25B	17.7	13.6	13.9	25.0	0.0	0.0	0.0	70.1	FQ Compliant
JCM	Secure Air Charter	19	H25B	15.9	10.7	17.1	25.0	0.0	0.0	0.0	68.7	FQ Low Tier
KFS	Kallitta Flying Services	6	LJ45	21.7	2.8	15.0	25.0	0.0	0.0	0.0	64.5	FQ Low Tier
ECJ	East Coast Jets Inc.	6	H25B	15.9	13.9	8.3	25.0	0.0	0.0	0.0	63.1	FQ Low Tier
RAX	Royal Air Freight	14	FA50	17.2	8.3	12.5	25.0	0.0	0.0	0.0	63.0	FQ Low Tier
NUS	Northern Illinois Flight	6	ASTR	20.5	2.8	12.5	25.0	0.0	0.0	0.0	60.8	FQ Low Tier
WDY	Phoenix Airline Services	15	FA50	18.7	11.7	3.1	25.0	0.0	0.0	0.0	58.5	FQ Low Tier
VJT	Vistajet	6	GLEK	22.2	2.8	8.3	25.0	0.0	0.0	0.0	58.3	FQ Low Tier
LAK	Red Wing	12	C560	18.3	0.0	11.4	25.0	0.0	0.0	0.0	54.6	FQ Low Tier
RLJ	Empyrean Jet	9	H25B	15.9	5.6	3.6	25.0	0.0	0.0	0.0	50.1	FQ Low Tier



Corporate Jets (Single Operator)

30 Operations per year or greater – Fly Quiet Score 2021

OPERATOR				FLY QUIET ELEMENTS				BONUSES			OVERALL	
Code	Operator	Total Ops	Primary Aircraft Type	Quiet Fleet Score (25 Points)	Follow Procedures Score (25 points)	Quieter Events Score (25 Points)	Voluntary Curfew Score (25 Points)	Quiet Fleet Bonus (5 pts)	Fly RNP Bonus (5 pts)	Sustainability Bonus (5 pts)	Total Fly Quiet Score	Fly Quiet Rating Expectation
N894KS	KS Air Charter, LLC	53	C68A	25.0	22.3	25.0	25.0	5.0	0.0	0.0	102.3	FQ Top Tier
N393SG	N393SG, LLC	36	C25B	25.0	25.0	25.0	25.0	0.0	0.0	0.0	100.0	FQ Top Tier
N40HC	Hoar Aviation, LLC	30	C56X	25.0	22.6	25.0	25.0	0.0	0.0	0.0	97.6	FQ Top Tier
N50AG	TVPX Aircraft Solutions,	38	CL60	23.2	22.9	25.0	25.0	0.0	0.0	0.0	96.1	FQ Top Tier
N640AF	Vela Flight 2, LLC	42	E550	25.0	20.8	23.7	25.0	0.0	0.0	0.0	94.5	FQ Top Tier
N525PB	JCL Aviation, LLC	52	C25C	22.5	23.6	23.1	25.0	0.0	0.0	0.0	94.1	FQ Top Tier
N440AF	Vela Flight, LLC	31	E550	25.0	22.9	19.4	25.0	0.0	0.0	0.0	92.4	FQ Top Tier
N1440W	OVERLAND AIR LLC	55	C25C	22.5	23.6	21.3	25.0	0.0	0.0	0.0	92.3	FQ Top Tier
N115LF	FRIESS FOSTER S	32	CL30	25.0	25.0	16.9	25.0	0.0	0.0	0.0	91.9	FQ Top Tier
N881JH	FLAT CREEK AIRCRAFT LLC	46	F2TH	20.4	25.0	21.3	25.0	0.0	0.0	0.0	91.7	FQ Top Tier
N122WY	Strategic Organizational	67	C25B	25.0	17.3	24.1	25.0	0.0	0.0	0.0	91.4	FQ Top Tier
N585WT	Kedec Services, LLC	46	C25B	25.0	17.3	23.9	25.0	0.1	0.0	0.0	91.4	FQ Top Tier
N100VP	VCS Encore, LLC	34	C560	18.3	22.6	25.0	25.0	0.0	0.0	0.0	90.9	FQ Top Tier
N793KK	Banc of America Leasing &	34	F2TH	20.4	25.0	19.4	25.0	0.0	0.0	0.0	89.8	FQ Compliant
N371FP	Sea of Ice Holdings, LLC	33	GLF4	21.9	25.0	17.9	25.0	0.0	0.0	0.0	89.8	FQ Compliant
N281EB	Swan, Erik	33	PC24	21.6	25.0	17.3	25.0	0.0	0.0	0.0	88.9	FQ Compliant
N630WB	Roger Roger, LLC	109	HDJT	25.0	10.5	23.3	25.0	5.0	0.0	0.0	88.8	FQ Compliant
N393BV	IAC FALCON HOLDINGS LLC	66	GLEX	21.8	19.4	21.4	25.0	0.0	0.0	0.0	87.6	FQ Compliant
N37VR	Victor Romeo Aviation, LL	48	C680	25.0	9.9	22.5	25.0	5.0	0.0	0.0	87.4	FQ Compliant
N560TW	T.W. Lewis Aviation, LLC	49	C56X	25.0	17.4	19.6	25.0	0.0	0.0	0.0	87.0	FQ Compliant
N279D	Hawkeye Group, LLC	40	C25B	25.0	12.9	23.6	25.0	0.0	0.0	0.0	86.5	FQ Compliant
N117AL	Flying Aviation, LLC	60	GLF5	22.2	14.1	23.1	25.0	0.0	0.0	0.0	84.5	FQ Compliant
N616CC	Mays, L. Lowry	37	GLF4	21.9	25.0	12.5	25.0	0.0	0.0	0.0	84.4	FQ Compliant
N211PB	JOUST CAPITAL III LLC	56	GLEX	21.8	16.3	17.2	25.0	0.0	0.0	0.0	80.3	FQ Compliant
N900BC	CSMS Management, LLC	62	C700	25.0	5.4	22.5	25.0	0.0	0.0	0.0	77.9	FQ Compliant
N200RG	Admiral Beverage Corporat	51	H25B	15.9	22.0	12.5	25.0	0.0	0.0	0.0	75.4	FQ Compliant
N980CC	FJ20 166 LLC	105	GLEX	21.8	10.4	17.7	25.0	0.0	0.0	0.0	75.0	FQ Compliant
N499AV	Teton Leasing, LLC	45	C56X	25.0	0.0	22.6	25.0	0.0	0.0	0.0	72.6	FQ Compliant
N307ST	Fremont Beverages, Inc.	73	H25B	15.9	22.3	4.2	25.0	0.0	0.0	0.0	67.5	FQ Low Tier
N204BG	Precision Aviation, Inc.	42	C560	18.3	0.0	17.4	25.0	0.0	0.0	0.0	60.7	FQ Low Tier
N284CP	Teton Leasing, LLC	88	C560	18.3	0.0	12.6	25.0	0.0	0.0	0.0	55.9	FQ Low Tier
N308MR	MERLIN ONE AIRCRAFT LLC	30	C650	16.4	2.8	6.0	25.0	0.0	0.0	0.0	50.2	FQ Low Tier



Corporate Jets (Single Operator)

Between 30 and 6 Operation per Year – Fly Quiet Score 2021

Highest

OPERATOR				FLY QUIET ELEMENTS				BONUSES			OVERALL	
Code	Operator	Total Ops	Primary Aircraft Type	Quiet Fleet Score (25 Points)	Follow Procedures Score (25 points)	Quieter Events Score (25 Points)	Voluntary Curfew Score (25 Points)	Quiet Fleet Bonus (5 pts)	Fly RNP Bonus (5 pts)	Sustainability Bonus (5 pts)	Total Fly Quiet Score	Fly Quiet Rating Expectation
N104PC	Pappa Charlie, LLC	8	C750	25.0	25.0	25.0	25.0	5.0	0.0	0.0	105.0	FQ Top Tier
N197LL	Accelero, LLC	20	SF50	25.0	25.0	25.0	25.0	5.0	0.0	0.0	105.0	FQ Top Tier
N19RP	N19RP, LLC	10	C510	25.0	25.0	25.0	25.0	5.0	0.0	0.0	105.0	FQ Top Tier
N306GV	IBW Air Services, LLC	6	E55P	25.0	25.0	25.0	25.0	5.0	0.0	0.0	105.0	FQ Top Tier
N307JT	Jest Air, Ltd.	12	C25M	25.0	25.0	25.0	25.0	5.0	0.0	0.0	105.0	FQ Top Tier
N413N	Nicholas Services, LLC	6	E55P	25.0	25.0	25.0	25.0	5.0	0.0	0.0	105.0	FQ Top Tier
N450JF	Wasatch Aviation Group 45	6	E50P	25.0	25.0	25.0	25.0	5.0	0.0	0.0	105.0	FQ Top Tier
N502ET	Radial Services, LLC	14	EA50	25.0	25.0	25.0	25.0	5.0	0.0	0.0	105.0	FQ Top Tier
N520DF	Par Avion, LLC	8	C525	25.0	25.0	25.0	25.0	5.0	0.0	0.0	105.0	FQ Top Tier
N550KF	Acciones y Bienes Corpora	6	E55P	25.0	25.0	25.0	25.0	5.0	0.0	0.0	105.0	FQ Top Tier
N626LA	CESSNA AIRCRAFT COMPANY	6	C68A	25.0	25.0	25.0	25.0	5.0	0.0	0.0	105.0	FQ Top Tier
N650VM	TTX Holdings, LLC	16	C525	25.0	25.0	25.0	25.0	5.0	0.0	0.0	105.0	FQ Top Tier
N680MB	Ironstate East West, LLC	8	C680	25.0	25.0	25.0	25.0	5.0	0.0	0.0	105.0	FQ Top Tier
N6GU	LKM, Inc.	6	C680	25.0	25.0	25.0	25.0	5.0	0.0	0.0	105.0	FQ Top Tier
N751ED	Rilbel, LLC	12	C750	25.0	25.0	25.0	25.0	5.0	0.0	0.0	105.0	FQ Top Tier
N752WJ	CX 34, LLC	10	C750	25.0	25.0	25.0	25.0	5.0	0.0	0.0	105.0	FQ Top Tier
N7XE	D & H Airways, LLC	9	C525	25.0	25.0	25.0	25.0	5.0	0.0	0.0	105.0	FQ Top Tier
N824HH	Hilltop Holdings, Inc.	6	C680	25.0	25.0	25.0	25.0	5.0	0.0	0.0	105.0	FQ Top Tier
N83PM	Perugia Air, LLC	6	C68A	25.0	25.0	25.0	25.0	5.0	0.0	0.0	105.0	FQ Top Tier
N917FH	Global Transport Four, LL	6	C68A	25.0	25.0	25.0	25.0	5.0	0.0	0.0	105.0	FQ Top Tier
N920DS	IBW Air Services, LLC	8	E55P	25.0	25.0	25.0	25.0	5.0	0.0	0.0	105.0	FQ Top Tier
N92WG	DNDD Capital Holdings, LL	8	C25M	25.0	25.0	25.0	25.0	5.0	0.0	0.0	105.0	FQ Top Tier
N943JS	FE 46, LLC	10	C680	25.0	25.0	25.0	25.0	5.0	0.0	0.0	105.0	FQ Top Tier
N945JS	FE X 258, LLC	8	C750	25.0	25.0	25.0	25.0	5.0	0.0	0.0	105.0	FQ Top Tier
N947JS	Juliette Lima Bravo, LLC	6	C750	25.0	25.0	25.0	25.0	5.0	0.0	0.0	105.0	FQ Top Tier
N956JS	Alder Business Travel, LL	6	C750	25.0	25.0	25.0	25.0	5.0	0.0	0.0	105.0	FQ Top Tier

Lowest

OPERATOR				FLY QUIET ELEMENTS				BONUSES			OVERALL	
Code	Operator	Total Ops	Primary Aircraft Type	Quiet Fleet Score (25 Points)	Follow Procedures Score (25 points)	Quieter Events Score (25 Points)	Voluntary Curfew Score (25 Points)	Quiet Fleet Bonus (5 pts)	Fly RNP Bonus (5 pts)	Sustainability Bonus (5 pts)	Total Fly Quiet Score	Fly Quiet Rating Expectation
N910DF	Encore Jet Management, LL	6	C650	16.4	0.0	2.8	25.0	0.0	0.0	0.0	44.2	FQ Low Tier
N430SA	PDIA, LLC	12	C650	16.4	2.8	1.7	25.0	0.0	0.0	0.0	45.9	FQ Low Tier
N950SF	Teton Sales and Leasing,	29	F900	20.0	0.0	3.6	25.0	0.0	0.0	0.0	48.6	FQ Low Tier
N492FT	Pumpjack Aviation, LLC	16	BE40	15.4	0.0	9.6	25.0	0.0	0.0	0.0	50.0	FQ Low Tier
N270SC	Trans-Exec Air Service, I	9	GLF4	21.9	0.0	6.3	25.0	0.0	0.0	0.0	53.2	FQ Low Tier
N318GA	Garden Air, LLC	6	FA50	15.9	0.0	12.5	25.0	0.0	0.0	0.0	53.4	FQ Low Tier
N86TN	EKFJ, LLC	8	FA50	15.9	0.0	12.5	25.0	0.0	0.0	0.0	53.4	FQ Low Tier
N595PD	Sky Hawk, LLC	6	H25B	15.9	0.0	12.5	25.0	0.0	0.0	0.0	53.4	FQ Low Tier
N988RC	MOYLE PETROLEUM CO	6	LJ45	24.6	0.0	5.0	25.0	0.0	0.0	0.0	54.6	FQ Low Tier
N347BD	Citizens Asset Finance, I	6	FA7X	19.1	2.8	8.3	25.0	0.0	0.0	0.0	55.2	FQ Low Tier
N727TX	Citation N79KF, LLC	12	C650	16.4	2.8	11.4	25.0	0.0	0.0	0.0	55.6	FQ Low Tier
N453AM	N543AM, LLC	8	LJ35	19.0	8.3	3.6	25.0	0.0	0.0	0.0	55.9	FQ Low Tier
N367DA	Global Holding Corporatio	8	LJ35	19.0	0.0	12.5	25.0	0.0	0.0	0.0	56.5	FQ Low Tier
N990MM	Falcon 105, LLC	8	FA50	15.9	0.0	15.9	25.0	0.0	0.0	0.0	56.8	FQ Low Tier
N2NL	Stewart Aviation Services	6	SBR1	18.5	0.0	15.0	25.0	0.0	0.0	0.0	58.5	FQ Low Tier
N818EZ	Moon River Crossings, LLC	6	H25B	15.9	2.8	15.0	25.0	0.0	0.0	0.0	58.7	FQ Low Tier
N150SB	CWR Air, LLC	6	H25B	15.9	0.0	17.9	25.0	0.0	0.0	0.0	58.8	FQ Low Tier
N16SF	Avalair Aircraft Manageme	10	WW24	18.8	11.7	3.6	25.0	0.0	0.0	0.0	59.0	FQ Low Tier
N707SQ	CTP Holdings, Inc.	6	GALX	21.6	0.0	12.5	25.0	0.0	0.0	0.0	59.1	FQ Low Tier
N228SB	Jet Shares, LLC	26	BE40	15.4	16.7	2.1	25.0	0.0	0.0	0.0	59.2	FQ Low Tier
N106PG	Greco Equipment Leasing,	8	C650	16.4	0.0	17.9	25.0	0.0	0.0	0.0	59.3	FQ Low Tier
N420EH	Mach One CJ2, LLC	8	C25A	24.2	0.0	10.7	25.0	0.0	0.0	0.0	59.9	FQ Low Tier
N280RG	Delray Air 280, LLC	8	G280	24.0	2.8	8.3	25.0	0.0	0.0	0.0	60.1	FQ Low Tier
N143CB	GP CAM Aviation Partners	6	GALX	21.6	0.0	15.0	25.0	0.0	0.0	0.0	61.6	FQ Low Tier
N608JR	Excel Aviation, LLC	8	C560	18.9	0.0	17.9	25.0	0.0	0.0	0.0	61.7	FQ Low Tier
N811MB	Full Force Time Machine,	12	C56X	25.0	0.0	15.0	25.0	0.0	0.0	0.0	65.0	FQ Low Tier

Summary Best / Need to Improve

Best Operators by Category

❖ Air Carriers

- Frontier Airlines

❖ Corporate Jet Part 135 Operators

(30 or more annual operations per year)

- Trident Aircraft (WMN)
- Thrive Aviation (TIV)
- Sun Devil Aviation (SVL)

❖ Corporate Jet Part 135 Operators

(Less than 30 annual operations per year)

- Aitheras Aviation (PXG)
- Southern Winds (SWD)
- Chairman Airmotive (CHR)

❖ Corporate Jet Single Operators

(30 or more annual operations per year)

- KS Air Charter (N894KS) C68A
- N393SG LLC (N393SG) C25B
- Hoar Aviation (N40HC) C56X

❖ Corporate Jet Single Operators

(Less than 30 annual operations per year)

- KS Air Charter (N399DH) C68A
- Sirrine Hall Aviation (N626CT) C750
- IBW Air Services (N314GV) E55P

Low Scoring Operators by Category

❖ Corporate Jet Part 135 Operators

(30 or more annual operations per year)

- Avcenter (TTE)
- FltPlan.com (DCM)
- SC Aviation (COL)

❖ Corporate Jet Part 135 Operators

(Less than 30 annual operations per year)

- Empyreal Jet (RLJ)
- Red Wing (LAK)
- Vistajet (VJT)

❖ Corporate Jet Single Operators

(30 or more annual operations per year)

- Merin One (N308MR) C650
- Teton Leasing LLC (N284CP) C560
- Precision Aviation (N204BG) C560

❖ Corporate Jet Single Operators

(Less than 30 annual operations per year)

- Encore Jet Management (N910F) C650
- PDIA, LLC (N430SA) C650
- Teton Sales and Leasing (N950SF) F900



Summary

❖ Fly Quiet shows a continued overall trend of improvement or steady levels of Fly Quiet noise measures

- **Fleet Quality** shows trends in greater use of newer generation (quieter) aircraft and less of the older (louder) Stage 2 and Stage 3 aircraft.
- Aircraft are following the **flight procedure goals** with greater than 90% compliance and showing trends of increased compliance.
- The percentage of **higher noise level events** per operation are reducing as older technology aircraft leave the fleet.
- The number of **voluntary curfew hours** violations of jet flights continues to be low.
- *Note the number of jet operations are increasing (not accounted for in Fly Quiet) which can result in increased community annoyance; however, those aircraft are operating in a quieter manner.*



Next Steps

- ❖ Send out letters
 - Promote Top Tier operators, present certificate
 - Work with Low Tier operators to improve
 - Use up to date 2022 data to track operators
- ❖ Publish top operators on web site
- ❖ Prepare press release for media
- ❖ Other actions?

OPERATOR				FLY QUIET ELEMENTS				BONUSES			OVERALL	
Code	Operator	Total Ops	Primary Aircraft Type	Quiet Fleet Score (25 Points)	Follow Procedures Score (25 points)	Quieter Events Score (25 Points)	Voluntary Curfew Score (25 Points)	Quiet Fleet Bonus (5 pts)	Fly RNP Bonus (5 pts)	Sustainability Bonus (5 pts)	Total Fly Quiet Score	Fly Quiet Rating Expectation
XOJ	XOJet	10	CL30	24.4	25.0	25.0	25.0	0.0	0.0	0.0	99.4	FQ Top Tier
FTH	Mountain Aviation	25	C750	25.0	19.1	25.0	25.0	4.6	0.0	0.0	98.7	FQ Top Tier
VJT	Vistajet	6	GLEX	22.6	25.0	25.0	25.0	0.0	0.0	0.0	97.6	FQ Top Tier
EDG	Jet Edge	6	E35L	22.5	25.0	25.0	25.0	0.0	0.0	0.0	97.5	FQ Top Tier
LXJ	Bombardier FlexJet	73	E55P	24.6	19.1	23.9	25.0	2.5	0.0	0.0	95.2	FQ Top Tier
EJA	NetJets Aviation	218	C68A	24.8	18.0	23.9	25.0	3.0	0.0	0.0	94.7	FQ Top Tier
DPJ	Wheels Up Private Jets	21	C56X	21.7	17.6	25.0	25.0	0.0	0.0	0.0	89.2	FQ Compliant
EJM	Executive Jet Management	25	CL30	22.9	21.7	17.1	25.0	0.8	0.0	0.0	87.5	FQ Compliant
TIV	Thrive Aviation	8	C680	25.0	25.0	8.3	25.0	1.9	0.0	0.0	85.2	FQ Compliant
JTL	Jet Linx	16	C56X	21.7	8.8	25.0	25.0	0.0	0.0	0.0	80.5	FQ Compliant
JCY	Aerius Management	10	C25B	22.7	11.7	20.8	25.0	0.0	0.0	0.0	80.2	FQ Compliant
FDJ	Freedom Air	6	EA50	25.0	0.0	25.0	25.0	5.0	0.0	0.0	80.0	FQ Compliant
TWY	Sunset Aviation	31	GLF6	22.1	10.0	20.5	25.0	0.0	0.0	0.0	77.6	FQ Compliant
PXT	Pacific Coast Jet	13	C25B	24.8	0.0	25.0	22.0	0.0	0.0	0.0	71.8	FQ Compliant
BLK	USAC Airways 695	17	E35L	22.9	0.0	25.0	22.0	0.0	0.0	0.0	69.9	FQ Low Tier
KPO	NXT Jet	7	H25B	17.6	13.9	12.5	25.0	0.0	0.0	0.0	69.0	FQ Low Tier
TTE	Avcenter	9	C560	19.0	0.0	25.0	25.0	0.0	0.0	0.0	69.0	FQ Low Tier
COL	SC Aviation	8	H25B	15.9	13.9	5.0	25.0	0.0	0.0	0.0	59.8	FQ Low Tier